

# CATALOG PARTS

## WINDOW CHANNELS & WEATHERSTRIPS

### EASY WAY TO INSTALL SLIDING OR ROLLING WINDOWS

Cooper Standard Industrial and Specialty Group (ISG)'s Channels and Weatherstrips hold and protect glass securely while shielding occupants and contents from dust, moisture and noise. Our Channel and Weatherstrip products are manufactured to fit a variety of OEM and aftermarket applications, including classic auto restoration; sliding glass windows in office foyers; separation windows in taxis and police cars; recreational vehicles; and ticket booths.



#### APPLICATIONS

- Sliding Windows
- Inner Belts
- Outer Belts
- Glass Runs

#### MARKETS SERVED

- Automotive
- Heavy Machinery
- Marine
- Construction
- Manufacturing
- Transportation
- Recreational Vehicles

#### MATERIALS & STYLES

- Unbeaded with Steel Core
- Unbeaded All-Rubber Channels with Flocked or Coated Linings
- Beaded Channels
- Weatherstrips with Stainless Steel Beads
- Weatherstrips without Stainless Steel Beads

#### ADDITIONAL BENEFITS

- Eliminates Rattles
- Tight, Long-Lasting Fit to Cushion Glass
- Protects Against Corrosion, Moisture, Dust and Drafts
- Resists Fading



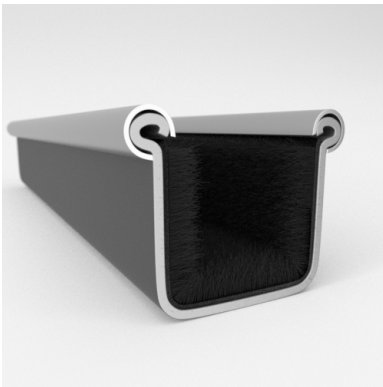
Scan the QR Code to Contact Us



- **Part No. : 75000133**
- **Product Category : Window Channel/Weatherstrip**
- **Product Family : Seals**
- Ship from Location : Spring Lake, MI
- Standard Pack Quantity : 25 pcs
- Standard Carton Size : 73.5 x 5.0 x 5.0
- Made to Order/Stock : MADE TO STOCK
- Profile/Section : Y658X
- Material Type : Uncovered
- Length : 6'
- Width : 0.500"
- Window Channel/Weatherstrip: Height : 0.500"
- Window Channel/Weatherstrip: Beaded or Unbeaded : Beaded
- Glass Range : 0.1875" to 0.250"
- Window Channel/Weatherstrip: Flexible or Rigid : Rigid
- Window Channel/Weatherstrip: Window Facing Material : Pile
- Same Profile As : 75000133, 75000134



- **Part No. : 75000133**
- **Product Category : Restoration Vehicle Seal**
- **Product Family : Seals**
- Restoration Vehicle Seal: Vehicle Make : Chevrolet & GMC
- Restoration Vehicle Seal: Vehicle Model : Chevrolet & GMC
- Restoration Vehicle Seal: Body : Sedan Deliveries
- Restoration Vehicle Seal: Platform : N/A
- Restoration Vehicle Seal: Start Year : 1964
- Restoration Vehicle Seal: End Year : 1967
- Restoration Vehicle Seal: Description : Front Door - Division Bar - Upper & Lower
- Restoration Vehicle Seal: Section : Y658X
- Made to Order/Stock : MADE TO STOCK
- Same Profile As : 75000133



- **Part No. : 75000133**
- **Product Category : Restoration Vehicle Seal**
- **Product Family : Seals**
- Restoration Vehicle Seal: Vehicle Make : Chevrolet & GMC
- Restoration Vehicle Seal: Vehicle Model : Chevrolet & GMC
- Restoration Vehicle Seal: Body : Pick Up
- Restoration Vehicle Seal: Platform : N/A
- Restoration Vehicle Seal: Start Year : 1964
- Restoration Vehicle Seal: End Year : 1967
- Restoration Vehicle Seal: Description : Front Door - Division Bar - Upper & Lower
- Restoration Vehicle Seal: Section : Y658X
- Made to Order/Stock : MADE TO STOCK
- Same Profile As : 75000133



- **Part No. : 75000134**
- **Product Category : Window Channel/Weatherstrip**
- **Product Family : Seals**
- Ship from Location : Spring Lake, MI
- Standard Pack Quantity : 25 pcs
- Standard Carton Size : 97.5 x 5.0 x 5.0
- Made to Order/Stock : MADE TO STOCK
- Profile/Section : Y658X
- Material Type : Uncovered
- Length : 8'
- Width : 0.500"
- Window Channel/Weatherstrip: Height : 0.500"
- Window Channel/Weatherstrip: Beaded or Unbeaded : Beaded
- Glass Range : 0.1875" to 0.250"
- Window Channel/Weatherstrip: Flexible or Rigid : Rigid
- Window Channel/Weatherstrip: Window Facing Material : Pile
- Same Profile As : 75000133, 75000134