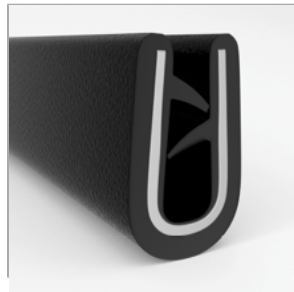


CATALOG PARTS

QUICKEDGE® TRIM

EASY INSTALL, SUPERIOR GRIP STRENGTH DECORATIVE & PROTECTIVE TRIM

Cooper Standard Industrial and Specialty Group (ISG)'s patented QuickEdge® Trims can be used virtually anywhere a quality decorative or protective edge is needed, simply push the trim down on any exposed edge and it snaps into place with the industry's strongest and most resilient gripping power. QuickEdge® Trim is produced using an embossed vinyl and is available in several decorative finishes and textures, as well as a variety of standard and custom colors.



APPLICATIONS

- Sharp Edges
- Boats
- Forklifts
- Golf Carts
- Helmets
- Truck & Tractor Cabs
- Fiberglass
- Cabinets
- Riding Mowers
- Machinery Guards
- Sheet Metal
- Playground Equipment

ADDITIONAL BENEFITS

- Flexible
- Quick and Easy to Install
- Aluminum Core Resists Rust and Corrosion
- Strong, Resilient Gripping Power
- No Fasteners or Adhesives Required
- Wide Variety of Colors, Finishes and Textures

MARKETS SERVED

- Automotive
- Aerospace
- Amusement Park Rides
- Construction
- Heavy Machinery
- Marine
- Transportation
- Manufacturing

MATERIALS & STYLES

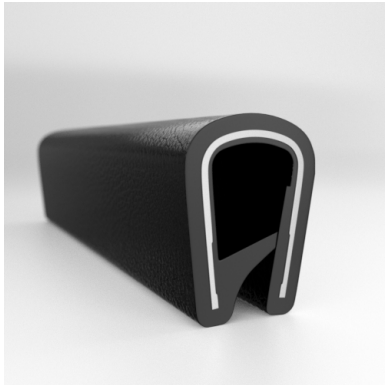
- Metal Core
- Aluminum Core
- Safety Trim (Orange and Yellow Safety Colors)



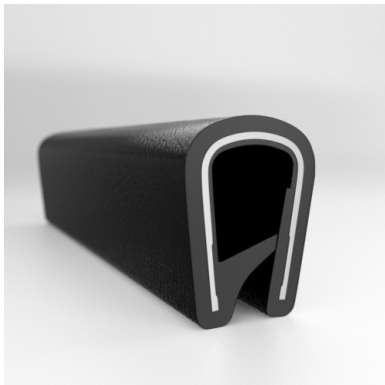
Scan the QR Code to Contact Us



- **Part No. : 75000338**
- **Product Category : QuickEdge@ Trim**
- **Product Family : Seals**
- Ship from Location : Spring Lake, MI
- Standard Pack Quantity : 1 x 200' rolls
- Standard Carton Size : 17 x 16 x 9
- Made to Order/Stock : MADE TO STOCK
- Profile/Section : T10
- Material Type : PVC with steel core
- Edge Trim Material : PVC
- Color : Black
- Length : 400'
- Width : 0.390"
- Leg Height : 0.518"
- Flange Grip Range : 0.060" to 0.170"
- QuickEdge@ Trim: Core Material : Steel
- QuickEdge@ Trim: Texture : Softone
- Same Profile As : 75000336, 75000337, 75000338, 75001585, 75001623, 75001844



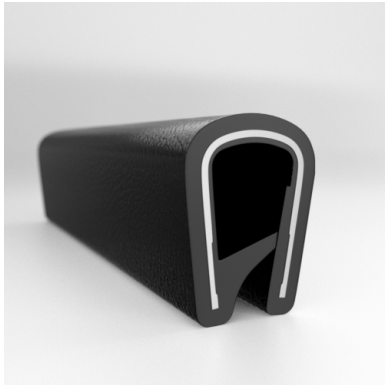
- **Part No. : 75001585**
- **Product Category : QuickEdge@ Trim**
- **Product Family : Seals**
- Ship from Location : Spring Lake, MI
- Standard Pack Quantity : 1 x 200' rolls
- Standard Carton Size : 17 x 16 x 9
- Made to Order/Stock : MADE TO STOCK
- Profile/Section : T10
- Material Type : PVC with aluminum core
- Edge Trim Material : PVC
- Color : Black
- Length : 400'
- Width : 0.390"
- Leg Height : 0.518"
- Flange Grip Range : 0.060" to 0.170"
- QuickEdge@ Trim: Core Material : Aluminum
- QuickEdge@ Trim: Texture : Softone
- Same Profile As : 75000336, 75000337, 75000338, 75001585, 75001623, 75001844



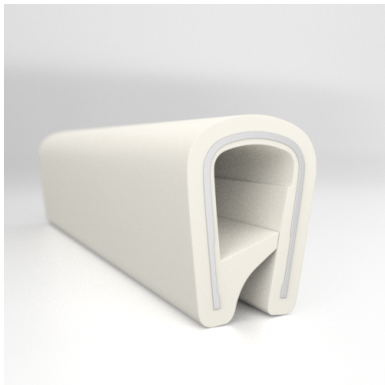
- **Part No. : 75001623**
- **Product Category : QuickEdge@ Trim**
- **Product Family : Seals**
- Ship from Location : Spring Lake, MI
- Standard Pack Quantity : 2 x 200' rolls
- Standard Carton Size : 17 x 16 x 9
- Made to Order/Stock : Discontinued - Limited Stock Available
- Profile/Section : T10
- Material Type : PVC with aluminum core
- Edge Trim Material : PVC
- Color : White
- Length : 200'
- Width : 0.390"
- Leg Height : 0.518"
- Flange Grip Range : 0.060" to 0.170"
- QuickEdge@ Trim: Core Material : Aluminum
- QuickEdge@ Trim: Texture : Softone
- Same Profile As : 75000336, 75000337, 75000338, 75001585, 75001623, 75001844



- **Part No. : 75001844**
- **Product Category : QuickEdge@ Trim**
- **Product Family : Seals**
- Ship from Location : Spring Lake, MI
- Standard Pack Quantity : 2 x 200' rolls
- Standard Carton Size : 17 x 16 x 9
- Made to Order/Stock : Obsolete
- Profile/Section : T10
- Material Type : PVC with aluminum core
- Edge Trim Material : PVC
- Color : Black
- Length : 400'
- Width : 0.390"
- Leg Height : 0.518"
- Flange Grip Range : 0.060" to 0.170"
- QuickEdge@ Trim: Core Material : Aluminum
- QuickEdge@ Trim: Texture : Granular
- Same Profile As : 75000336, 75000337, 75000338, 75001585, 75001623, 75001844



- **Part No. : 75000336**
- **Product Category : QuickEdge@ Trim**
- **Product Family : Seals**
- Ship from Location : Spring Lake, MI
- Standard Pack Quantity : 1 x 200' rolls
- Standard Carton Size : 17 x 16 x 9
- Made to Order/Stock : MADE TO STOCK
- Profile/Section : T10
- Material Type : PVC with steel core
- Edge Trim Material : PVC
- Color : Black
- Length : 200
- Width : 0.390"
- Leg Height : 0.518"
- Flange Grip Range : 0.060" to 0.170"
- QuickEdge@ Trim: Core Material : Steel
- QuickEdge@ Trim: Texture : Weave
- Same Profile As : 75000336, 75000337, 75000338, 75001585, 75001623, 75001844



- **Part No. : 75000337**
- **Product Category : QuickEdge@ Trim**
- **Product Family : Seals**
- Ship from Location : Spring Lake, MI
- Standard Pack Quantity : 1 x 200' rolls
- Standard Carton Size : 17 x 16 x 9
- Made to Order/Stock : Obsolete
- Profile/Section : T10
- Material Type : PVC with steel core
- Edge Trim Material : PVC
- Color : White
- Length : 200
- Width : 0.390"
- Leg Height : 0.518"
- Flange Grip Range : 0.060" to 0.170"
- QuickEdge@ Trim: Core Material : Steel
- QuickEdge@ Trim: Texture : Softone
- Same Profile As : 75000336, 75000337, 75000338, 75001585, 75001623, 75001844