

CATALOG PARTS

SELF-SEALING WEATHERSTRIPS

DURABLE SELF-SEALING WEATHERSTRIPS FOR FIXED WINDOWS

Cooper Standard Industrial and Specialty Group (ISG)'s self-sealing weatherstrips are easy to install and lock the glass securely in place while providing an effective seal from the elements. Our self-sealing weatherstrips are flexible and versatile and can be used in a variety of markets and industries for fixed windows applications such as garage door windows, RV windows, automotive windows and heavy farming equipment.



APPLICATIONS

- Stationary Windows
- Moonroofs
- Construction Truck Cabs
- Windshields

MARKETS SERVED

- Automotive
- Heavy Machinery
- Marine
- Construction
- Agriculture
- Transportation
- Recreational Vehicles

MATERIALS & STYLES

- EPDM* Anti-oxidizing Black Rubber
- One-piece Self-sealing Weatherstrip
- Two-piece Self-sealing Weatherstrip
- Sliding Window Assemblies

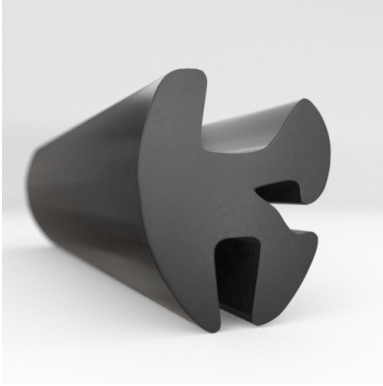
**Compounded to meet requirements for ASTM D 2000 SAEJ 200 M4AA77 A13 B13 C12 F17 P2*

ADDITIONAL BENEFITS

- Easy to Install
- Cost-effective
- Durable
- Will Not Stain, Shrink or Tear
- UV, Ozone and Weather Resistant
- Withstands Extreme Temperatures



Scan the QR Code to Contact Us



- **Part No. : 75000463**
- **Product Category : Self Sealing Weatherstrip**
- **Product Family : Seals**
- Ship from Location : Spring Lake, MI
- Standard Pack Quantity : 1 x 50' roll
- Standard Carton Size : 19.25 x 19.25 x 4.5
- Made to Order/Stock : MADE TO STOCK
- Self Sealing Weatherstrip: Locking Type : Two-Piece Locking
- Profile/Section : AS1456
- Material Type : EPDM Rubber
- Color : Black
- Length : 50'
- Glass Range : 0.1875" to 0.2500"
- Self Sealing Weatherstrip: Body Panel Range : 0.1730" to 0.1950"
- Self Sealing Weatherstrip: Mating Lock Strip : 75000687
- Application : Window